

# NORTH CENTRAL OFFICE/WAREHOUSE SPACE FOR LEASE

3603-3625 Metro Parkway  
San Antonio, Texas



**Location:** 46,900 SF Multi-Tenant Industrial Warehouse building located in the Wetmore Business Park near the San Antonio Airport, just off Wetmore Road on Metro Parkway. Conveniently located just north of the expanded cross town Wurzbach Parkway.

**Size:** Suite 3637 3,600 SF - Available 7/1/2021

**Rates:** \$6.75-7.50 PSF

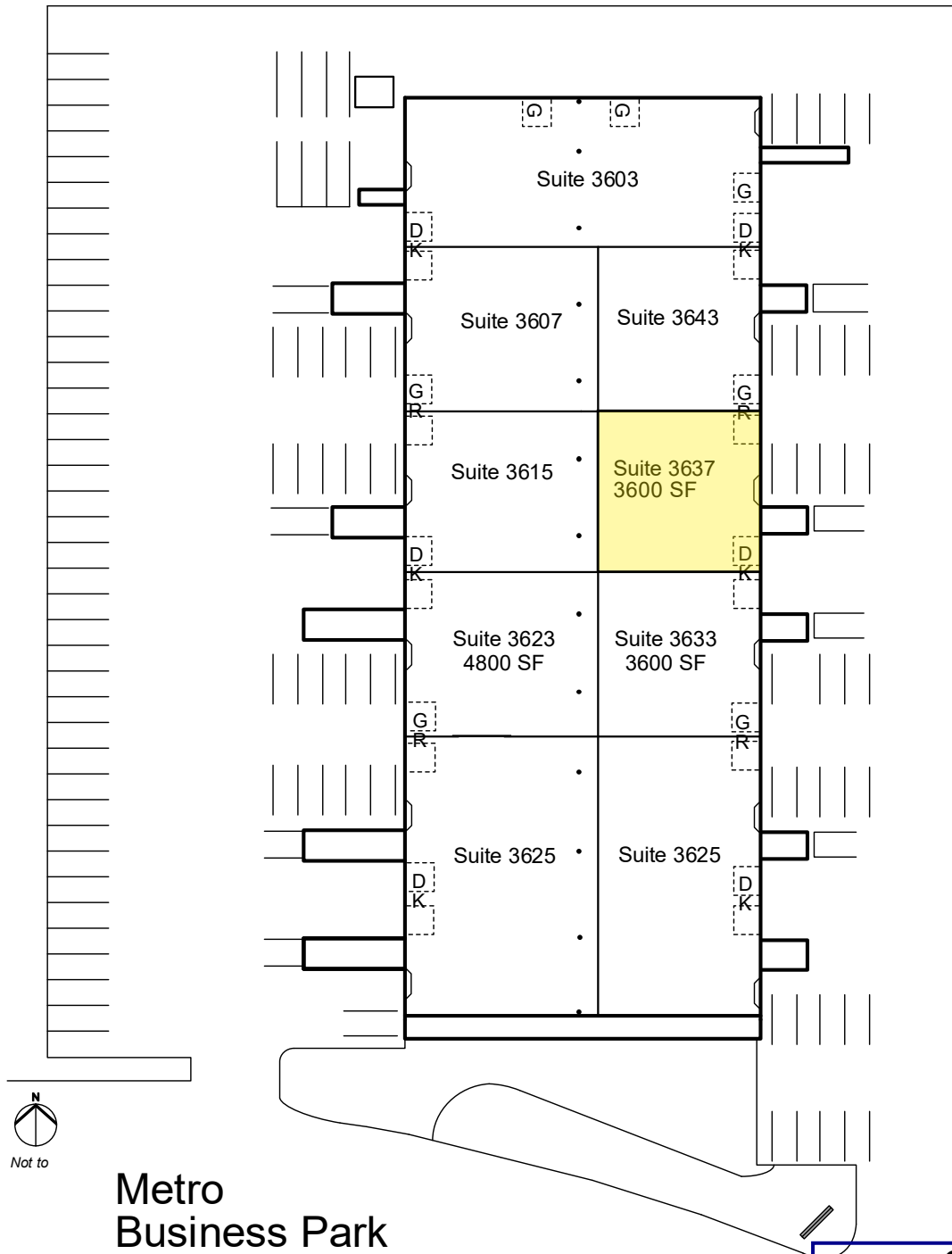
**Lease Structure:** NNN estimated to be \$3.77 PSF

**Construction:** Tilt wall construction with dock high and grade level doors. Concrete paving.

**Contact:**

Brian P. Brady, Broker  
Michelle Fontenot  
1920 Nacogdoches, Suite 201  
San Antonio, TX 78209  
210-826-0191 210-771-4106

# NORTH CENTRAL OFFICE/WAREHOUSE SPACE FOR LEASE



**Metro  
Business Park**  
3603-3645 Metro

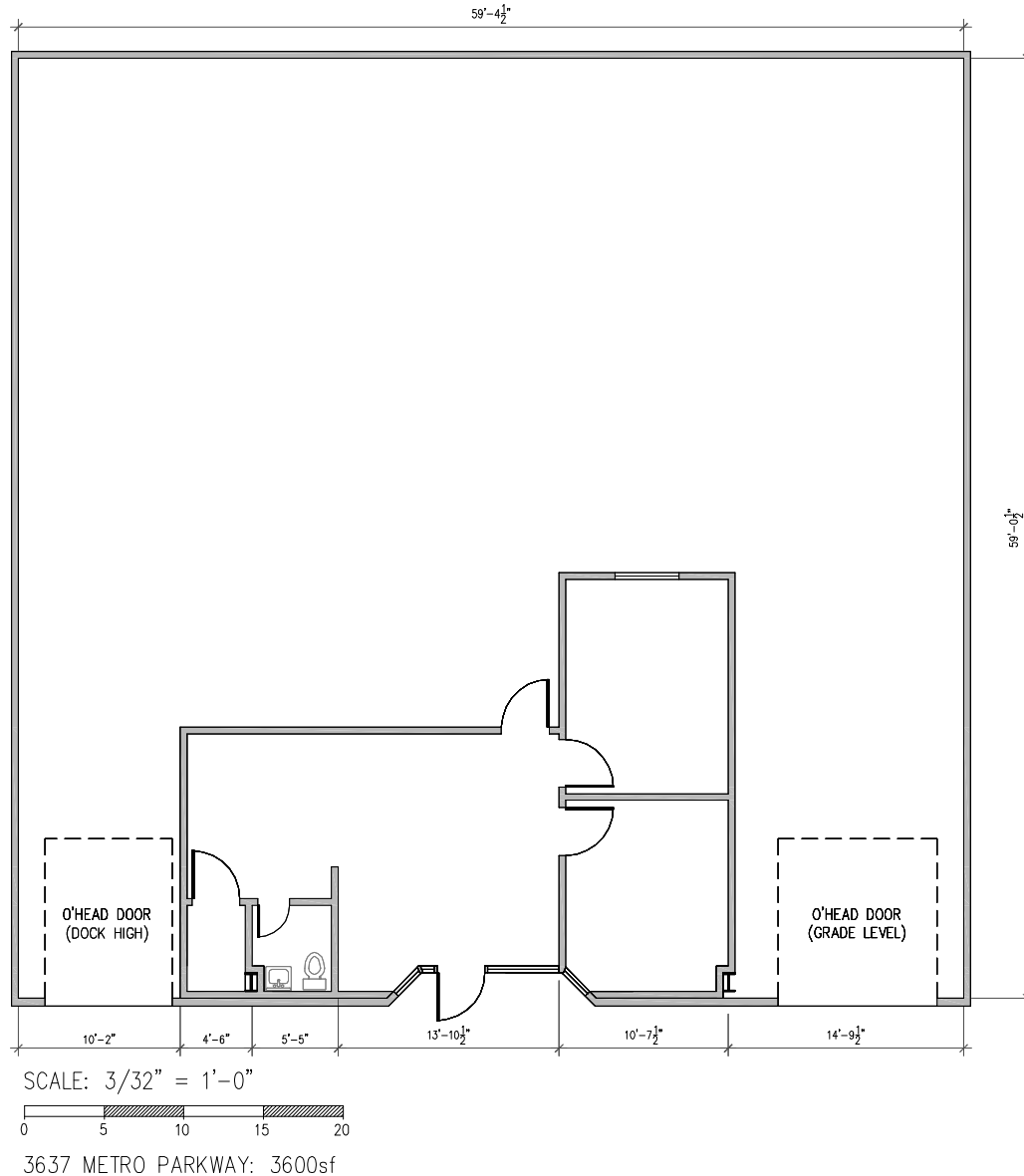
**Contact:**

Brian P. Brady, Broker  
Michelle Fontenot  
1920 Nacogdoches, Suite 201  
San Antonio, TX 78209  
210-826-0191 210-771-4106

This information has been secured from sources we believe to be reliable, but we make no representation or warranties, expressed or implied, as to the accuracy of the information. All references to age, sq. footage, income, and expenses are approximate. Buyers should conduct their own independent investigations and rely only on those results. Copyrighted 2010 by Brian Brady Company, Inc

# NORTH CENTRAL OFFICE/WAREHOUSE SPACE FOR LEASE

## PROPOSED FLOOR PLAN 3637 Metro Parkway



3,600 SF

This information has been secured from sources we believe to be reliable, but we make no representation or warranties, expressed or implied, as to the accuracy of the information. All references to age, sq. footage, income, and expenses are approximate. Buyers should conduct their own independent investigations and rely only on those results. Copyrighted 2010 by Brian Brady Company, Inc

# NORTH CENTRAL OFFICE/WAREHOUSE SPACE FOR LEASE

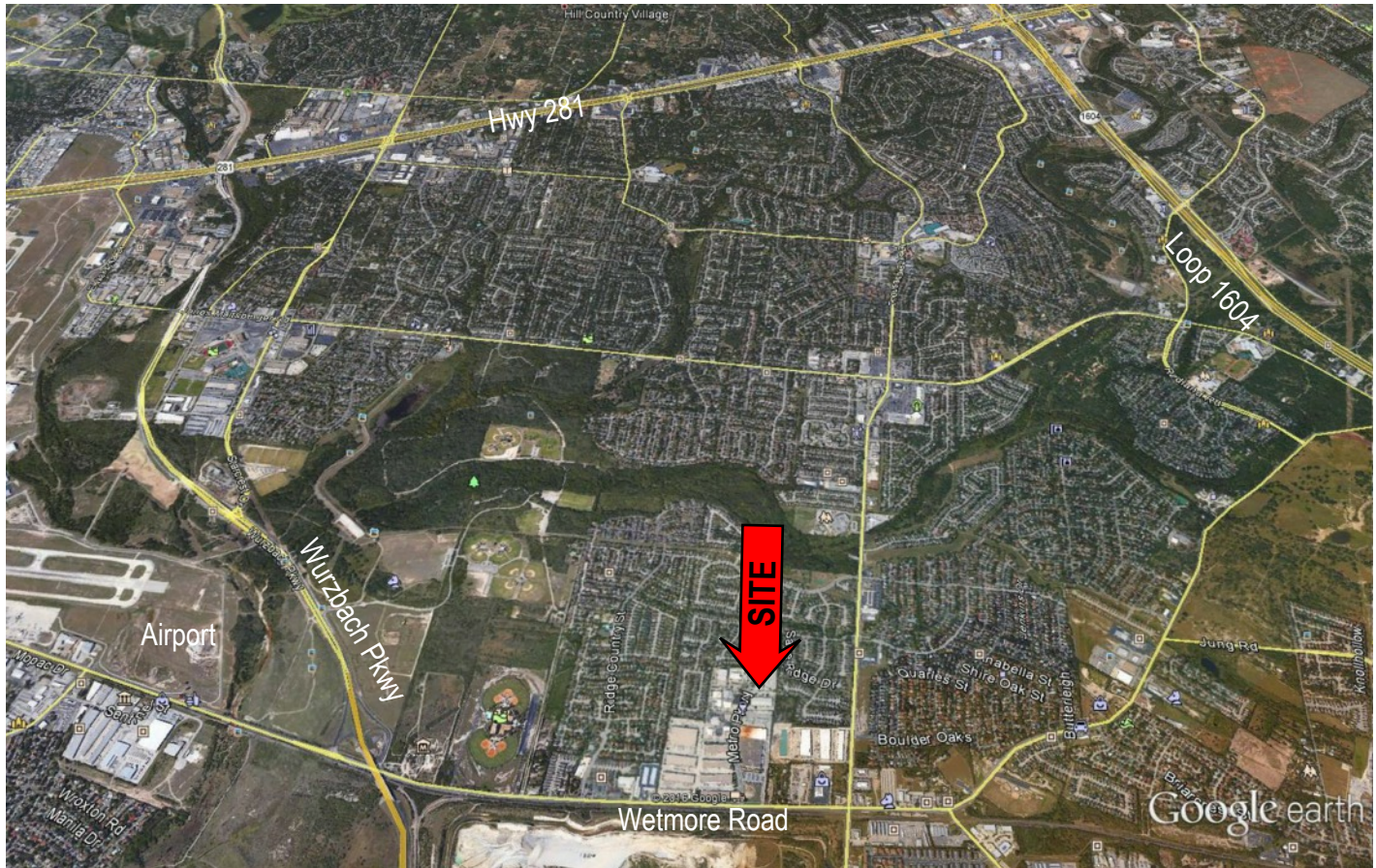


## **Contact:**

Brian P. Brady, Broker  
Michelle Fontenot  
1920 Nacogdoches, Suite 201  
San Antonio, TX 78209  
210-826-0191 210-771-4106

This information has been secured from sources we believe to be reliable, but we make no representation or warranties, expressed or implied, as to the accuracy of the information. All references to age, sq. footage, income, and expenses are approximate. Buyers should conduct their own independent investigations and rely only on those results. Copyrighted 2010 by Brian Brady Company, Inc

# NORTH CENTRAL OFFICE/WAREHOUSE SPACE FOR LEASE



## Contact:

Brian P. Brady, Broker  
Michelle Fontenot  
1920 Nacogdoches, Suite 201  
San Antonio, TX 78209  
210-826-0191 210-771-4106

This information has been secured from sources we believe to be reliable, but we make no representation or warranties, expressed or implied, as to the accuracy of the information. All references to age, sq. footage, income, and expenses are approximate. Buyers should conduct their own independent investigations and rely only on those results. Copyrighted 2010 by Brian Brady Company, Inc



## Information About Brokerage Services

11-2-2015

Texas law requires all real estate license holders to give the following information about brokerage services to prospective buyers, tenants, sellers and landlords.

### TYPES OF REAL ESTATE LICENSE HOLDERS:

- A **BROKER** is responsible for all brokerage activities, including acts performed by sales agents sponsored by the broker.
- A **SALES AGENT** must be sponsored by a broker and works with clients on behalf of the broker.

### A BROKER'S MINIMUM DUTIES REQUIRED BY LAW (A client is the person or party that the broker represents):

- Put the interests of the client above all others, including the broker's own interests;
- Inform the client of any material information about the property or transaction received by the broker;
- Answer the client's questions and present any offer to or counter-offer from the client; and
- Treat all parties to a real estate transaction honestly and fairly.

### A LICENSE HOLDER CAN REPRESENT A PARTY IN A REAL ESTATE TRANSACTION:

**AS AGENT FOR OWNER (SELLER/LANDLORD):** The broker becomes the property owner's agent through an agreement with the owner, usually in a written listing to sell or property management agreement. An owner's agent must perform the broker's minimum duties above and must inform the owner of any material information about the property or transaction known by the agent, including information disclosed to the agent or subagent by the buyer or buyer's agent.

**AS AGENT FOR BUYER/TENANT:** The broker becomes the buyer/tenant's agent by agreeing to represent the buyer, usually through a written representation agreement. A buyer's agent must perform the broker's minimum duties above and must inform the buyer of any material information about the property or transaction known by the agent, including information disclosed to the agent by the seller or seller's agent.

**AS AGENT FOR BOTH - INTERMEDIARY:** To act as an intermediary between the parties the broker must first obtain the written agreement of *each party* to the transaction. The written agreement must state who will pay the broker and, in conspicuous bold or underlined print, set forth the broker's obligations as an intermediary. A broker who acts as an intermediary:

- Must treat all parties to the transaction impartially and fairly;
- May, with the parties' written consent, appoint a different license holder associated with the broker to each party (owner and buyer) to communicate with, provide opinions and advice to, and carry out the instructions of each party to the transaction.
- Must not, unless specifically authorized in writing to do so by the party, disclose:
  - that the owner will accept a price less than the written asking price;
  - that the buyer/tenant will pay a price greater than the price submitted in a written offer; and
  - any confidential information or any other information that a party specifically instructs the broker in writing not to disclose, unless required to do so by law.

**AS SUBAGENT:** A license holder acts as a subagent when aiding a buyer in a transaction without an agreement to represent the buyer. A subagent can assist the buyer but does not represent the buyer and must place the interests of the owner first.

### TO AVOID DISPUTES, ALL AGREEMENTS BETWEEN YOU AND A BROKER SHOULD BE IN WRITING AND CLEARLY ESTABLISH:

- The broker's duties and responsibilities to you, and your obligations under the representation agreement.
- Who will pay the broker for services provided to you, when payment will be made and how the payment will be calculated.

**LICENSE HOLDER CONTACT INFORMATION:** This notice is being provided for information purposes. It does not create an obligation for you to use the broker's services. Please acknowledge receipt of this notice below and retain a copy for your records.

_____ Licensed Broker/Broker Firm Name or Primary Assumed Business Name	_____ License No.	_____ Email	_____ Phone
_____ Designated Broker of Firm	_____ License No.	_____ Email	_____ Phone
_____ Licensed Supervisor of Sales Agent/ Associate	_____ License No.	_____ Email	_____ Phone
_____ Sales Agent/Associate's Name	_____ License No.	_____ Email	_____ Phone

\_\_\_\_\_  
Buyer/Tenant/Seller/Landlord Initials

\_\_\_\_\_  
Date

Regulated by the Texas Real Estate Commission  
TAR 2501

Information available at [www.trec.texas.gov](http://www.trec.texas.gov)  
IABS 1-0

RFM Commercial, Inc., 1920 Nacogdoches, Suite 201 San Antonio, TX 78209  
Dick McCaleb

Produced with zipForm® by zipLogix 18070 Fifteen Mile Road, Fraser, Michigan 48026 [www.ziplogix.com](http://www.ziplogix.com)

Phone: 210.826.00623 Fax: 210.820.3969

### Contact:

Brian P. Brady, Broker  
Michelle Fontenot  
1920 Nacogdoches, Suite 201  
San Antonio, TX 78209  
210-826-0191 210-771-4106

This information has been secured from sources we believe to be reliable, but we make no representation or warranties, expressed or implied, as to the accuracy of the information. All references to age, sq. footage, income, and expenses are approximate. Buyers should conduct their own independent investigations and rely only on those results. Copyrighted 2010 by Brian Brady Company, Inc